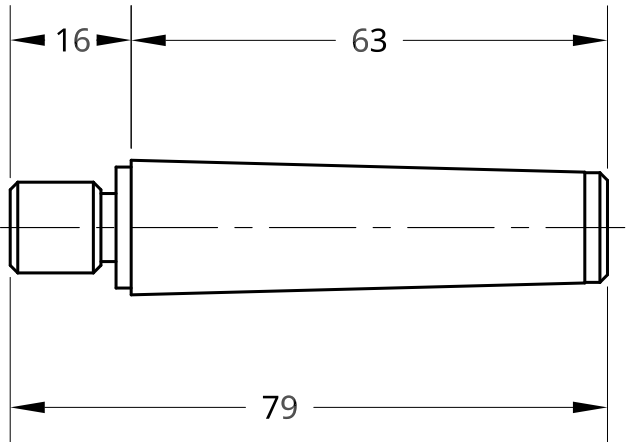




Use MT2 blank end arbor  
threaded for drawbar  
L/H end male thread M12



This drawing is copyright of Alex du Pre. You may freely use and share it for personal hobby purposes, but please credit the copyright owner and reference amdengineer.com. It may not be used, reproduced, copied or printed for any commercial purposes without the permission of the copyright owner. Please contact amdengineer.com.

UNLESS OTHERWISE SPECIFIED, DIMENSIONS ARE IN MILLIMETERS  ANGULAR $\angle = \pm ^\circ$  SURFACE FINISH   DO NOT SCALE DRAWING  BREAK ALL SHARP EDGES AND REMOVE BURRS  THIRD ANGLE PROJECTION 	DRAWN	NAME	DATE	Pt 4 - Taper		
	CHECKED	Alex du Pré	11/26/2016			
	APPROVED			TITLE  ----		
				SIZE A	DWG NO. ----	REV. -
		MATERIAL	FINISH	SCALE 1:1	WEIGHT	SHEET 1 of 1